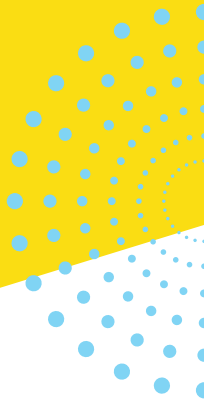


Broker Process Flow for FSB Mortgage



Uploading a New Loan File

- Select Upload New Loan – left column under “Add a Loan”
- Import FNMA 3.4 file
 - Multiple files can be uploaded simultaneously
 - Origination channel is Wholesale

Register File / Price / Lock / Float

- *Special note – AEs cannot see a file in the system until it has been floated or locked*
- Loan Actions > Price/Lock
- Populate required fields
 - Pay special attention to Compensation type – this will be calculated in pricing
 - Pay special attention to Admin Fee Waiver (Yes = Fees-In. No = Fees-Out)
- Search Programs – a new window will open
- Clicking a Rate will expand the window to pricing and loan period options
- Selecting a price and loan period will open options
 - Select what you want to do: Search again, Register/Float, Register/Lock
 - You will be required to enter an estimated close date when you select Float or Lock

Reissuing Credit / Running DU

- Loan Actions > SERVICES
- Select Fannie Mae or Freddie Mac
- Select Credit Provider from Credit Agency dropdown
- Input name, password, credit reference #
- Leave the “Order Underwriting Only” and “Order Credit Only” boxes unchecked
- Check the box that authorization has been provided
- Click submit to DU
- Refresh the page (F5 > enter), and an “AU Decision” icon should appear in the Loan Information box

Inputting Fees for LE

- Loan Actions > Edit Fees Worksheet
- Choose closing cost template

- Update estimated closing date and first payment date
 - These drive escrow calculations
- Input all relative fees
- For Borrower Paid Compensation loans, make sure the LO Compensation amount is entered
- Use the calculator fields for escrows to set payment due dates
- Aggregate escrows – click the “?” and wait for the calculation to complete
- Click Save

Ordering MI Quote

- Loan Actions > Edit 1003 or Loan Actions > Services
 - If using Edit 1003: Types & Terms tab, look for “Loan Amount w/MIPFF” and click on the furthest most right icon
 - If using Services: From the top Services dropdown, select “Mortgage Insurance”
- Populate form with relevant selections
 - Choose Service Provider if you have a request
 - Leave “Use Manual Credentials” unchecked
 - Click Submit Request
 - Click select and the rate quote will appear and populate into 1003
- **Special Note – It is critical that an MI quote is pulled in PRIOR TO the initial LE that goes out. It is NOT enough to have an MI payment in the Proposed Housing Expense!**

LE and Disclosures

- All Lender-Paid Compensation files require an anti-steering form
 - Loan Actions > Loan Info
 - Click on Custom Fields tab
 - Enter 3 options
 - Click Save
- Add any additional/necessary forms to package
 - Loan Snapshot screen – eDoc Manager (Folder tab at top left)
 - Click Forms tab
 - Click the box next to any forms needed (i.e., Property Inspection Waiver)
 - Click Add to Folder
- LE Audit
 - Loan Actions > Submit to Doc Provider
 - Click Audit
 - System will identify warnings – most are informational. “Fatal” errors must be resolved.
 - When ready to generate disclosures, click Process

- Take note of the Package Type dropdown. This determines if you are reviewing prior to sending, generating e-sign documents for e-delivery, or selecting print and sign.
 - Special note – this drop down ALSO includes “Retrieve E-Signed Documents”. You should do this after the borrowers have completed their e-sign. To retrieve, change Package Type to Retrieve, click Process, then click the blue disk icon to save.
 - Package can be viewed in e-Doc manager. Folder > Findings > Doc Magic Disclosure PDF
- When selecting e-sign, a new window will open for borrower(s) email. Input and click Submit

Change of Circumstance

- For all COCs – email coc@fsbmortgage.com

Upload File and Submit for Initial UW

- In E-Doc Manger, click Upload (upper right-hand corner)
- Select your saved file(s) – file size maximum is 50MB. FSB Mortgage will index
- Click Open
- Select “Submission Package” from dropdown and click “Save Files”
- Loan Actions > Submit to lender
 - Add any relevant comments (i.e., if there are multiple loans submitted for the same borrower)
- Click Send Loan
- You will receive automated emails and the file progresses when UW issues a decision

Attaching Conditions

- Click “summary” or “management” under Pipeline in the left navigation menu
- Click the Question Mark icon under the UWD heading to bring up the UW Decision Document
- A Popup will show the approval
- Scroll down to conditions
- Click the paper icon on the right of each condition to attach a file to the condition
- Click Select Files, find document(s) to upload, and label the type of condition you are uploading as closely as possible
- Click Save
- When ALL conditions have been attached, go to Loan Actions > Update Lender
- Enter any comments and click “Update Lender”

Order Appraisal

- Loan Actions > Order Appraisal
- Complete the order type, property type, date needed, contact details, and payment method fields.
 - **Special Note – For the credit card, enter numbers ONLY...no spaces or hyphens**
 - If preferred, a payment link can be sent to the borrower by choosing “Other” in the payment method field. A payment link will be sent to the borrower’s email
- Click Submit Appraisal Order

- If any documents are needed (purchase contract, etc) – Select Upload Documents at the bottom of the screen – Drag/Drop or Select Files, pick Type and Description
- Additional products (i.e. Final Inspection) can also be ordered here by changing Appraisal Type
 - *Special Note – Additional Products MUST be uploaded to the UW. Unlike the initial Appraisal, they are not automatically delivered. This includes corrections, invoices, and final certs.*

Submit for Initial CD

- *Special note – This may be requested once file is locked, and appraisal received and reviewed by UW, and title is in with property tax info*
- All invoices for 3rd party fees - credit report, appraisal, processing fee, etc. should be uploaded prior to requesting CD
- Upload Estimated CD from Title
- Loan Actions > Loan Info
 - Complete contacts tab for realtor and title info
- Loan Actions > Fee Sheet (Note: NOT Edit Fees Worksheet)
- Click Merge Fees Worksheet button
 - Review for accuracy
- Click Submit

Submit for closing

- *Special Note – CD must be accepted by borrower first*
- Loan Actions > Closing Request
- Input date, time, and location
- Click Submit

NMLS #411341. All rates and programs subject to change without notice. This information is intended to assist Mortgage Industry Professionals only and is not an advertisement to extend consumer credit.



FSB Mortgage powered by First Savings Bank. FSB Mortgage is a nationwide lender offering a broad range of loan products to broker and mortgage banking partners. You can count on FSB Mortgage to come through with diverse lending products, powerful loan features, and fast turn times.